

Nemasys® G

Advanced Biocontrol for White Grubs

General Description

- No restrictions in use and no re-entry interval.
- Proven curative control.
- No requirements for protective clothing.
- No concerns for residue runoff.
- Safe for applicators, users and the environment.

Nemasys® G contains live nematodes (*Heterorhabditis bacteriophora*) in their vigorously infective juvenile stage. These nematodes attack pest larvae by entering their natural body openings. Once inside, they release symbiotic bacteria that quickly kill the insect larvae. Reproduction inside the larvae releases a new generation of hungry, infective juveniles that disperse in search of further prey.

Packaging

Available in trays of 50 million and 250 million nematodes.

Directions for Use

For Optimum Results

- Use when grubs are in the 1st and 2nd instar.
- Soil should be 12-30 °C (54-86 °F) at application and for at least two weeks after application.
- Agitate nematodes constantly during application.
- Avoid direct sunlight. Apply in early morning or late afternoon/evening.
- Application before/during/after rain is highly desirable.
- Ensure soil is moist before application and for at least two weeks after.
- Irrigate treated area immediately after application with 0.30 cm (1/8 in) of water to move the nematodes into the soil profile. Time the irrigation to within 30 minutes under hot, dry conditions and within 2 hours under cool, wet conditions.

(Continued)

Precautions

This product contains living organisms that require special handling and application procedures.

- This product will not control the adult or egg stage of targeted insects.
- **DO NOT SUBDIVIDE.** Once opened, use the entire tray immediately.
- Use cool water for mixing.
- **DO NOT STORE MIXED SUSPENSIONS.** Use nematode suspensions immediately after they have been mixed.
- Remove filters that are 50 mesh or finer from application equipment and nozzles.
- Do not exceed 300 psi pump pressure.
- Do not use in application systems where nozzle aperture is smaller than 0.5 mm.
- Agitate nematodes constantly during application.
- **DO NOT SPOT TREAT.** Treat the entire crop at the appropriate rate.

Read and follow all label instructions thoroughly before applying Nemasys G.

Storage and Disposal

Storage

Upon receipt of product, remove from shipping packaging and use immediately or store in a refrigerator at 40 °F (5 °C). **DO NOT FREEZE.** Ensure good air circulation around each tray. Do not use if past expiration date or incorrectly stored.

Disposal

Product and packaging waste resulting from the use of this product, or unused, outdated product, may be disposed of on site or at any approved waste disposal facility in accordance with federal and local regulations.

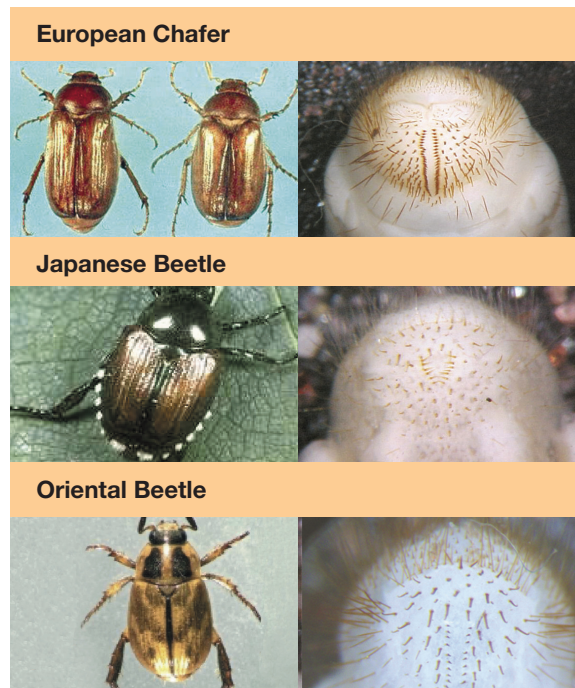
Nemasys® G can be used in a rotational program with many conventional insecticides to reduce pest resistance.

Recommended Rates

Nemasys G can be applied by using common application equipment, including tank sprayers and backpack sprayers.

- Fill spray vessel or stock tank with half of the required amount of cool, clean water.
- Start agitation.
- In a bucket, premix the required number of Nemasys G trays in water. Use a minimum water volume of 1 liter (1 quart) per tray. Mix thoroughly.

Pest Identification



- Rinse bucket contents into spray tank.
- Continue agitation while mixing and fill spray tank to the required spray volume.
- Maintain sufficient agitation during application to ensure uniform dispersion of nematodes in the spray mix.

Application Rates ¹

Location	Pest	50 Million Size	250 Million Size	Volume
United States	European Chafer Grub	50-100 mil. / 1000 ft ² (1-2 trays / 1000 ft ²)	2-3 bil. / ac. (8-12 trays / ac.)	65-130 gal. / ac. (1.5-3 gal. of water / 1000 ft ²).
	Oriental & Japanese Beetle Grubs	25-50 mil. / 1000 ft ² (0.5-1 trays / 1000 ft ²)	1-2 bil. / ac. (4-8 trays / ac.)	65-130 gal. / ac. (1.5-3 gal. of water / 1000 ft ²).
Canada	European Chafer Grub	50-100 mil. / 100 m ² (1-2 trays / 100 m ²)	5-7.5 bil. / ha (20-30 trays / ha)	600-1200 L / ha (6-12 L of water / 100 m ²).
	Oriental & Japanese Beetle Grubs	25-50 mil. / 100 m ² (0.5-1 trays / 1000 m ²)	2.5-5 bil. / ha (10-20 trays / ha)	600-1200 L / ha (6-12 L of water / 100 m ²).

¹ Use higher recommended rates when pest pressure is high.