

# TOWER<sup>®</sup> HERBICIDE

**BASF**  
The Chemical Company

## A New Herbicide for the Control of Broadleaves, Grasses and Sedges in Ornamentals

**Tower<sup>®</sup> herbicide** is an effective preemergence herbicide for the control of numerous weeds that cause problems in field-grown and landscape ornamentals, including yellow nutsedge, carpetweed, bittercress, purslane, crabgrass and barnyardgrass. It is also highly effective on new emerging weeds like doveweed and groundsel, which are some of the most troublesome weeds that invade ornamentals (see label for a complete list of weeds). **Tower** has a unique mode of action and its easy-to-use liquid formulation allows it to be tank-mixed with **Pendulum<sup>®</sup> herbicide** to provide unsurpassed weed control.

*Tower will not control emerged and established weeds.*



## Weeds and Grasses Controlled

Over 50 weeds are listed on the **Tower** label, including annual grasses, broadleaves and certain nutsedges.

- *Amaranthus* spp.
- Annual sedges
- Barnyardgrass
- Bluegrass spp.
- Carpetweed
- Crabgrass spp.
- Common purslane
- Doveweed
- Goosegrass
- Nightshade spp.
- Nodding spurge
- Spotted spurge
- Yellow nutsedge
- And more

### Use Site:

Commercial ornamental production including field-grown and container nurseries, tree plantations, landscape and grounds maintenance. Not for use in greenhouses or on residential lawns.

**Formulation:** 6.0 EC (liquid)

**Packaging:** 64 oz. container

**Active Ingredient:** Dimethenamid-P

**Chemical Family:** Chloroacetamide (Group 15)

**Mode of Action:** Interferes with cell development.

**Behavior in Plant:** Inhibits seedling shoots, does not move readily in the plant.

**Use Rates:** Short-term (2-4 months): 21 fl. oz. per acre or 0.5 fl. oz. per 1,000 sq. ft.  
Long-term (4-6 months): 32 fl. oz. per acre or 0.7 fl. oz. per 1,000 sq. ft.

**Signal Word:** WARNING

**REI:** 12 hours for agricultural workers

**PPE:** Long-sleeved shirt and long pants; chemical-resistant gloves; shoes and socks; protective eyewear

**TOWER<sup>®</sup>**  
HERBICIDE

## Keys to Success

Uniform application of **Tower** over the treated area is essential for effective control. The herbicide must be applied prior to weed germination. The addition of a surfactant is not required. Apply as a directed-spray application to the base. Do not apply to newly transplanted seedlings until plants have been watered and soil has settled and packed around root system. Do not make applications at bud break. Efficacy will be improved if application is followed by one-half inch of rainfall or its equivalent in sprinkler irrigation. Refer to specimen label for additional information.

## Product Attributes

- An effective preemergence herbicide for the control of numerous grasses, broadleaves and sedges in field-grown nursery stock, landscapes and noncrop areas
- New active ingredient for ornamentals
- Controls a wide range of weed species – more than 50 grassy and broadleaf weeds, including new, emerging ornamental weeds
- Provides control of yellow nutsedge
- Can be tank-mixed with **Pendulum® AquaCap™** herbicide for unsurpassed weed control in ornamentals

**Tower provides unsurpassed control of yellow nutsedge, and effectively controls more than 50 other troublesome weeds.**



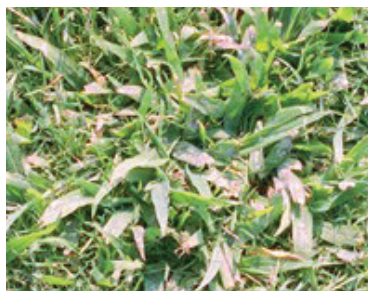
Doveweed



Bittercress



Yellow Nutsedge



Crabgrass

**TOWER**<sup>®</sup>  
HERBICIDE

Always read and follow label directions.

©2011 BASF Corporation. All rights reserved. APN 08-14-002-0036